



Program of study for:
Engineering & Technology Project
 Lead the Way

Racine Unified School District
 Case, Horlick and Park High Schools
 Career Cluster: Science, Technology



This program of study plan should serve as a guide in the development of a secondary/post-secondary pathway. Courses listed within this plan are only recommended and are indicative of the courses needed to complete a pathway.

EDUCATION LEVEL	GRADE			
SECONDARY	9	10	11	12
Career Interest Inventory Administered and Program of Study Initiated for all learners				
ENGLISH/ LANGUAGE ARTS	Freshman English	Sophomore English	Junior English	English Elective and/or Speech
MATH	Algebra 1	Geometry	Algebra 2	Statistics or PreCalculus
SCIENCE	Lab Science or Biology (Acc)	Biology	Chemistry (AS) or AP Chemistry	Physics (AS) or AP Physics
SOCIAL STUDIES/ SCIENCES	US History	World History	American Government	Economics Sociology
CAREER AND TECHNICAL COURSES CENTRAL TO THIS PATHWAY	PLTW-Introduction to Engineering Design (ED) (AS) (3749) Machining/Fabrication Systems 1 & 2 (3770)	PLTW-Principles of Engineering (POE) (AS) (3747)	PLTW-Digital Electronics (DE) (AS) (3751)	Design for Industry (3748) Electronic Systems Capstone 3 & 4 (AS) (3752) DC/AC 1 (YO)
AP = Advanced Placement, D/TC = Dual/Transcripted Credit, YO =Youth Options, AS = Advanced Standing				
CAREER AND TECHNICAL EDUCATION COURSES, ELECTIVES, AND STUDENT ORGANIZATIONS RELATED TO THE PATHWAY	<ul style="list-style-type: none"> ◆ Skills USA ◆ Work Based Learning Activities ◆ World Languages ◆ Electric/Electronic Systems 1 & 2 AS ◆ Machining/Fabricating Systems 1 & 2 ◆ Power Systems 1 & 2 ◆ Higher Expectations & Career Portfolio 			

Find More Detailed
 Career Pathway
 & Post Secondary
 Information at:

WICareerPathways.org/students

Post-Secondary Schools that have programs related to this career pathway

Partner Post-Secondary School



Racine Unified Administrative Service Center

Brad Haag
Supervisor

262-631-7089

Keri Koceja
Secretary

262-631-7088



Occupations Related to This Program of Study

Electronics Technician, Electrical Engineer
Biomedical Technician & Engineer
Telecommunication Technician & Engineer
Civil Engineer
Aerospace Engineer
Aeronautical Engineer
Agricultural Engineer
Agricultural Technician
Application Engineer
Architectural Engineer
Automotive Engineer
Biomedical Engineer
Biotechnology Engineer
CAD Technician
Chemical Engineer
Civil Engineer
Communications Engineer
Computer Engineer
Computer Programmer
Construction Engineer
Electrical Engineer
Electronics Technician
Geothermal Engineer
Industrial Engineer
Manufacturing Engineer
Manufacturing Technician
Marine Engineer
Mechanical Engineer
Metallurgist
Mining Engineer
Nuclear Engineer
Petroleum Engineer
Product/Process Engineer
Survey Technician
Systems Engineer
Technology & Engineering Teacher

Please contact program instructor at school

JI Case High School 262-619-4200
 Wm. Horlick High School 262-619-4300
 Washington Park High School 262-619-4400

It is the policy of the Racine Unified School District, pursuant to s.118.13 Wis. Stats., and P19, that no person, on the basis of sex, race, color, religion, national origin, ancestry, creed, pregnancy, marital or parental status, sexual orientation, or physical, mental, emotional or learning disability may be denied admission to any school in this District or be denied participation in, be denied the benefits of, or be discriminated against in any curricular, extracurricular, public services, recreational, or other program or activity.

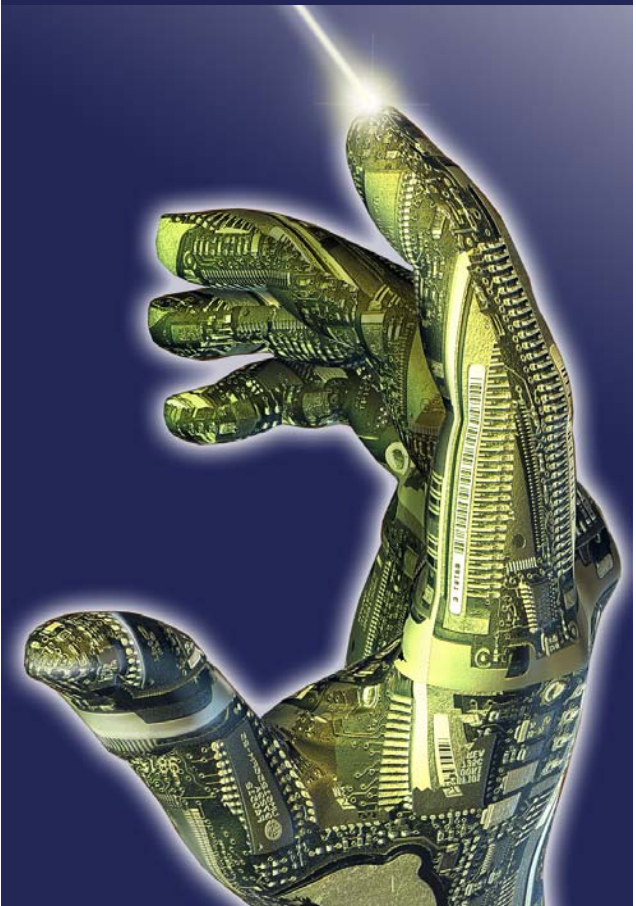
This policy also prohibits discrimination under related Federal Statutes, including Title VI of the Civil Rights Act of 1964 (race and national origin), Title IX of the Education Amendments of 1972 (sex), and section 504 of the Rehabilitation Act of 1973 (handicap).

If any person believes the Racine Unified District or any part of the school organization has inadequately applied the principals and/or regulations of s.118.13 Wis. Stats./P19 and Title VI (race, national origin), and/or Title IX (sex), and /or Section 504 (handicap) or in some way discriminates against pupils on the basis of sex, race, religion, color, national origin, ancestry, creed, pregnancy, mental, emotional or learning disability or handicap, she/he may bring forward a complaint to the

District Equity Coordinator
 Racine Unified School District
 3109 Mt. Pleasant Street, Racine, WI 53404

Program of Study/Career Pathway

Engineering & Technology Project Lead the Way



3705

